

Build to Suit

2515 NE Orchard Ave
McMinnville, OR 97128

Rail served manufacturing
property with good access
to Hwy 99

TWO BUILDINGS PROPOSED

- 1. 26,000 SF
- 2. 30,000 SF

26,000 or 30,000 SF Available

Built-to-suit office

8.92 acres site

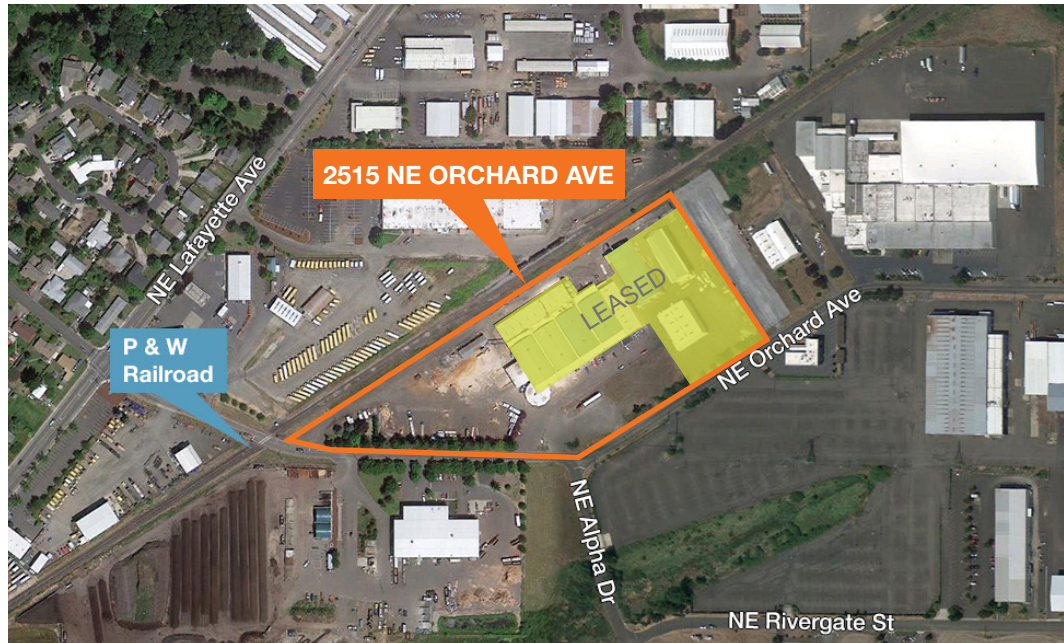
Fenced and paved yard

4000 amps, 3 phase, 4 wire,
480 volt power

Rail spur on site served by
Portland Western Railroad

Zoned general industrial (M-2)

Call for lease rate



Contact

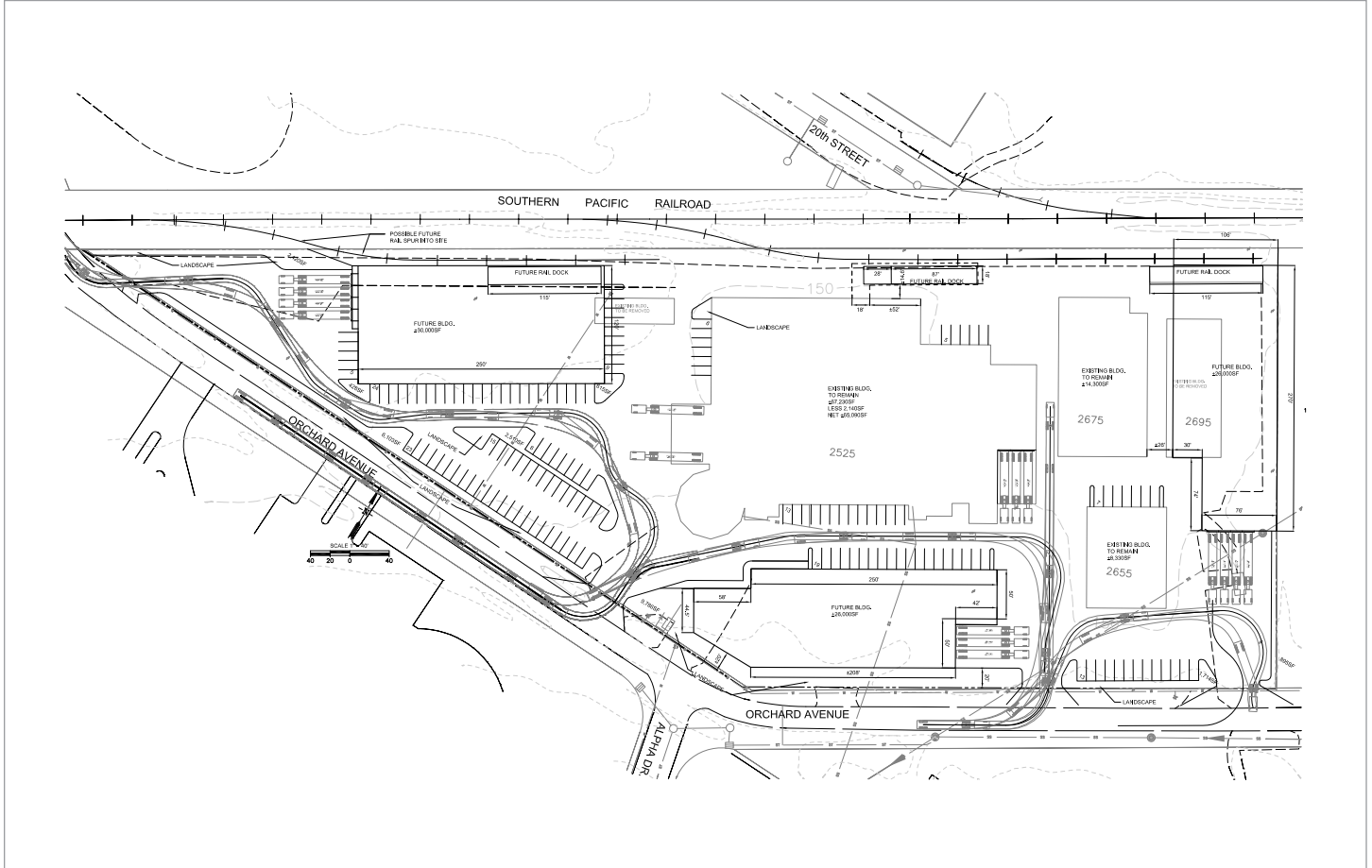
Jeff Brooks, SIOR

Vice President

503.221.2296

jbrooks@kiddermathews.com

Proposed Site Plan



Contact

Jeff Brooks, SIOR

Vice President

503.221.2296

jbrooks@kiddermathews.com