

# Northeast Gateway District Historic Warehouse 1145 Lafayette Ave NE - McMinnville

## \$695,000



Mike Morris, Broker  
Direct: 971-241-3847  
[Mike@MillerConsultingGroup.net](mailto:Mike@MillerConsultingGroup.net)

Mary Martin Miller, CCIM  
Owner/Principal Broker  
Direct: 503-740-9200  
[Mary@MillerConsultingGroup.net](mailto:Mary@MillerConsultingGroup.net)

- 30,000 square feet: 10,000 Office & 20,000 Warehouse
- Zoning C-3 in The Northeast Gateway District

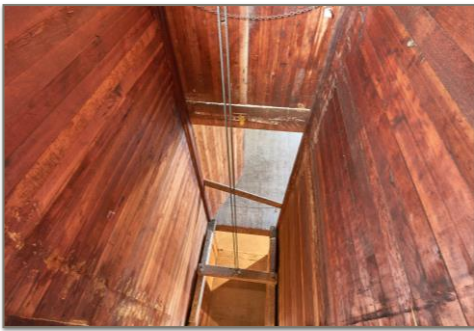
The Northeast Gateway District encompasses McMinnville's Granary District and Pinot Quarter. This area to be completely renovated beginning in 2017. Structure consists of multiple levels of usable square feet. Ideally suited for winery, brewer, distillery. This is a solid building with giant timber framing but will require improvement. Buyer to verify square footage.

Shown by Appointment  
Contact Listing Office

**MILLER CONSULTING GROUP, LLC**  
COMMERCIAL AND INVESTMENT REAL ESTATE SERVICES

Information contained herein has been obtained from the owner of the property or other sources that are deemed to be reliable.  
There is no reason to doubt the accuracy, but it is not guaranteed.

# 1145 Lafayette Avenue NE - McMinnville



Mike Morris, Broker  
Direct: 971-241-3847  
[Mike@MillerConsultingGroup.net](mailto:Mike@MillerConsultingGroup.net)

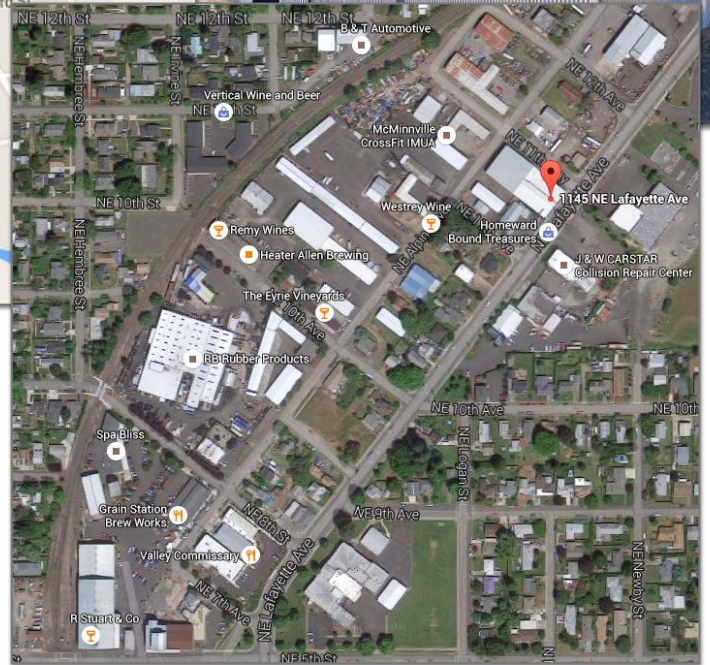
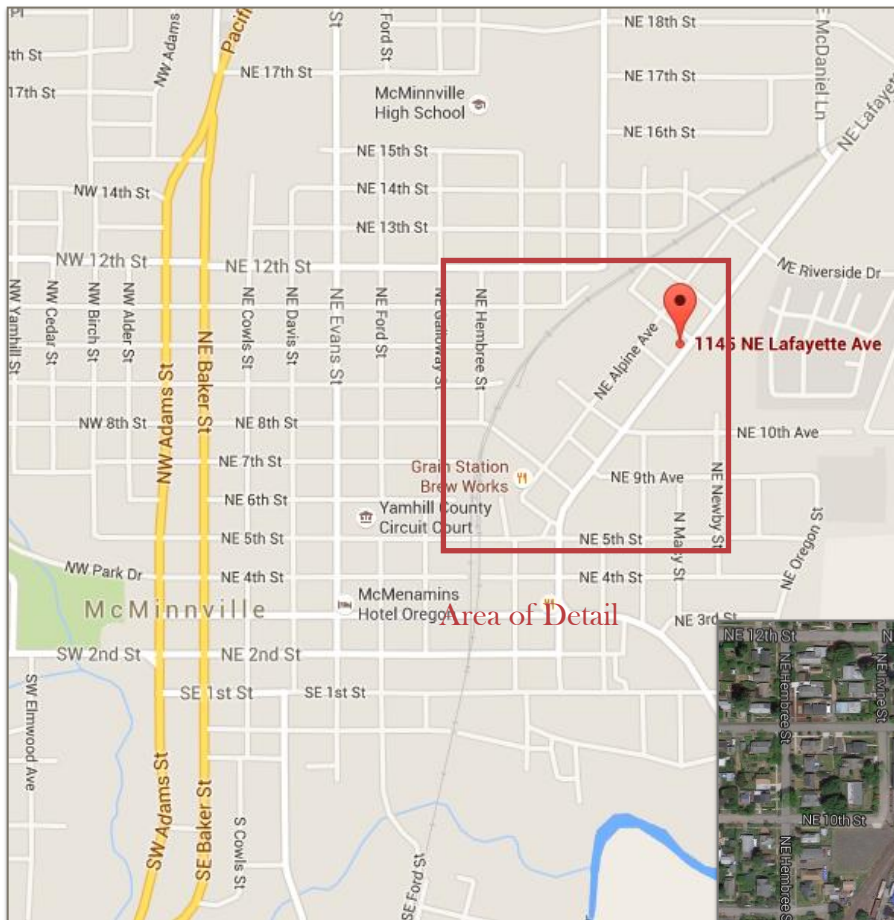
Mary Martin Miller, CCIM  
Owner/Principal Broker  
Miller Consulting Group, LLC  
Direct: 503-740-9200  
Email: [mary@millerconsultinggroup.net](mailto:mary@millerconsultinggroup.net)



**MILLER CONSULTING GROUP, LLC**  
COMMERCIAL AND INVESTMENT REAL ESTATE SERVICES

Information contained herein has been obtained from the owner of the property or other sources that are deemed to be reliable. There is no reason to doubt the accuracy, but it is not guaranteed.

# 1145 Lafayette Avenue NE - McMinnville



## MILLER CONSULTING GROUP, LLC

COMMERCIAL AND INVESTMENT REAL ESTATE SERVICES

Information contained herein has been obtained from the owner of the property or other sources that are deemed to be reliable. There is no reason to doubt the accuracy, but it is not guaranteed.