

2070 SW Highway 99W/SW Booth., McMinnville, Oregon 97128 (4.6 acres)

Located just off Highway 99W. Hotel, commercial, and retail establishments surrounding. Across from Linfield College boundary.

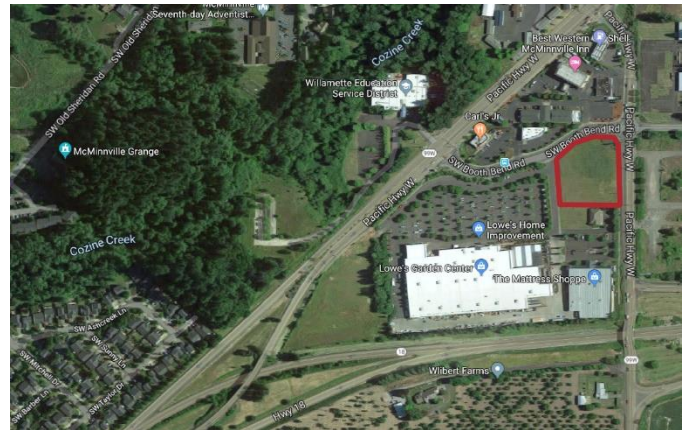
DETAILS

| | |
|---------------|-----------------|
| Land Area | ± 4.6 acres |
| Type | Site |
| Status | Active |
| Certification | C-3: Commercial |
| Sale | \$1,590,000 |
| Lease | No |
| Tax Lot | R4429 02500 |



UTILITIES

| | |
|---------------------|---|
| Electricity & Water | McMinnville Water & Light – Combined lowest rates in Oregon |
| Sewer | City of McMinnville |
| Gas | NW Natural |
| Telecom | City wide fiber optic network |



CONTACT

ECONOMIC DEVELOPMENT

Scott Cooper, CEcD
 Executive Director
 McMinnville Economic Development Partnership
 503.474.6814
Scott@McMinnvilleBusiness.com

BROKER/OWNER

Gene Zinda
 Windermere Pacific Crest Realty
 503.474.1234
gzinda@onlinemac.com

