

## Build to Suit

2515 NE Orchard Ave  
McMinnville, OR 97128

Rail served manufacturing  
property with good access  
to Hwy 99

**TWO BUILDINGS PROPOSED**

- 1. 30,000 SF
- 2. 26,000 SF

7,500 - 30,000 SF Available

Built-to-suit office

8.92 acres site

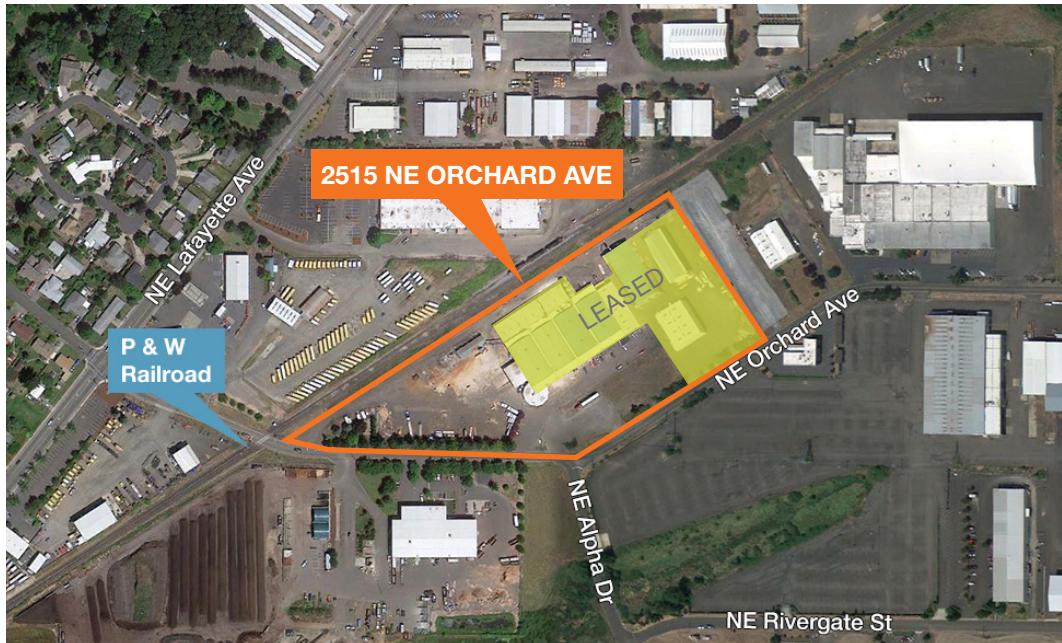
Fenced and paved yard

4000 amps, 3 phase, 4 wire, 480  
volt power

Rail spur on site served by  
Portland Western Railroad

Zoned general industrial (M-2)

Call for lease rate



### Contact

**Jeff Brooks, SIOR**  
Vice President  
503.221.2296  
jbrooks@kiddermathews.com