

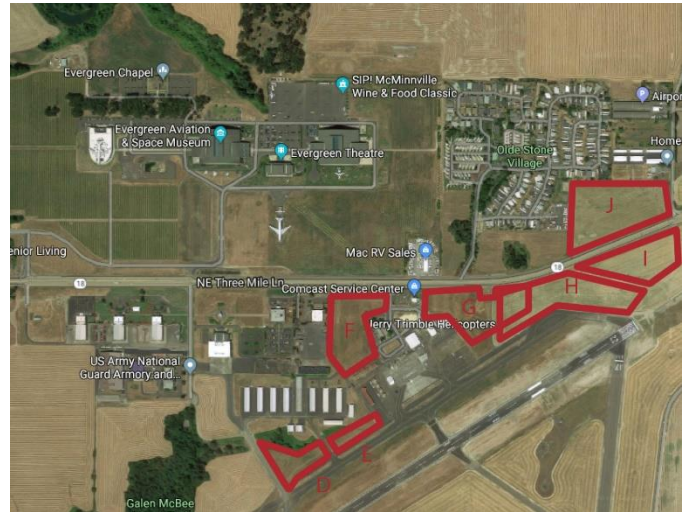
4000 SE Cirrus Avenue McMinnville, Oregon 97128 (Airport – Lot G/H)

Located at the McMinnville Municipal Airport along OR Highway 18. Multiple Sites available for lease only and subject to Airport Land Lease Agreement. Lot F = 6.9 acres, Lot G = 5.7 acres, and Lot H = limited developable space but combinable with Lot G. A portion is leasable for hangars.



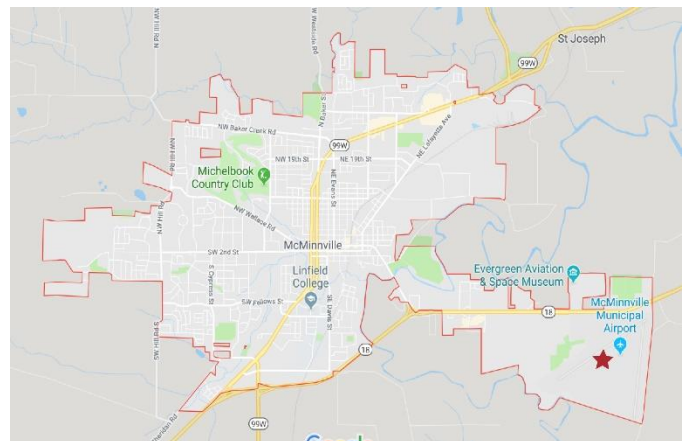
DETAILS

Land Area	± 5.7 acres
Type	Site
Status	Active
Certification	M-2 General Industrial
Sale	No
Lease	Lease Only, Airport Land Lease Agreement
Tax Lot	R4426 0100



UTILITIES

Electricity & Water	McMinnville Water & Light – Combined lowest rates in Oregon
Sewer	City of McMinnville
Gas	NW Natural
Telecom	City wide fiber optic network



CONTACT

ECONOMIC DEVELOPMENT

Scott Cooper, CEcd
Executive Director
McMinnville Economic Development Partnership
503.474.6814
Scott@McMinnvilleBusiness.com

BROKER/OWNER

Mike Bisset
City of McMinnville
503.434.7312
Mike.bisset@mcminnvilleoregon.gov