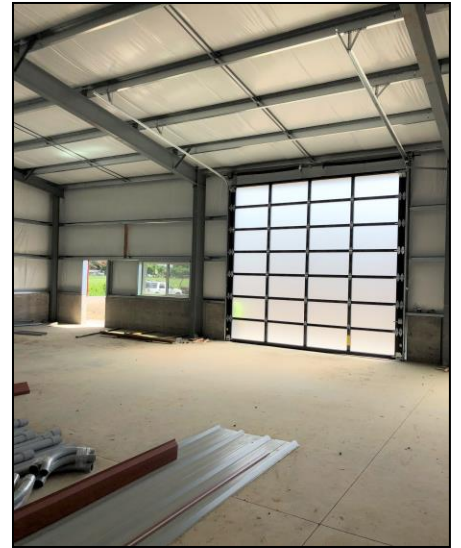


# 1445 NE Miller St, McMinnville

## .75 per sq. ft. per month MG Lease



### Mike Morris, Broker

Direct: 971-241-3847

[Mike@MillerConsultingGroup.net](mailto:Mike@MillerConsultingGroup.net)

### Mary Martin Miller, CCIM

Owner/Principal Broker

Direct: 503-740-9200

[Mary@MillerConsultingGroup.net](mailto:Mary@MillerConsultingGroup.net)

Licensed in the State of Oregon

### New Industrial Spaces in Great McMinnville Location

- Complex consists of 4-10,000 sq. ft buildings
- Suites from 2,000 to 10,000 sq. ft
- Zoned M2
- Large roll up doors
- Easy access to highway 99W
- Up to 24,000 sq. ft by spring of 2019

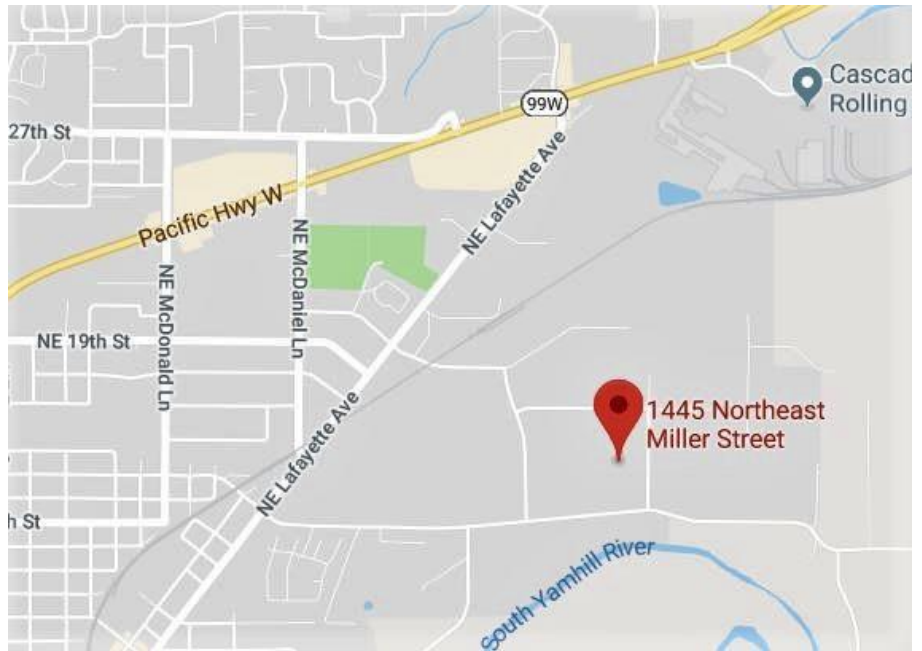
Shown by appointment

Contact Listing Agent for Complete Package



## **MILLER CONSULTING GROUP, LLC**

COMMERCIAL AND INVESTMENT REAL ESTATE SERVICES



New steel industrial building located in McMinnville Industrial Park. Complex will consist of 4 10,000 square foot buildings when completed. Suites ranging from 2000 SF up to 10,000 in first phase. 2nd Phase to begin in Fall with up to 20,000 SF available. Owner will consider some minor tenant improvements. Owner pays exterior maintenance and landscape, insurance and property taxes.

**Mike Morris, Broker**

Direct: 971-241-3847

[mike@millerconsultinggroup.net](mailto:mike@millerconsultinggroup.net)

**Mary Martin Miller, CCIM**

Owner/Principal Broker

Miller Consulting Group, LLC

Direct: 503-740-9200

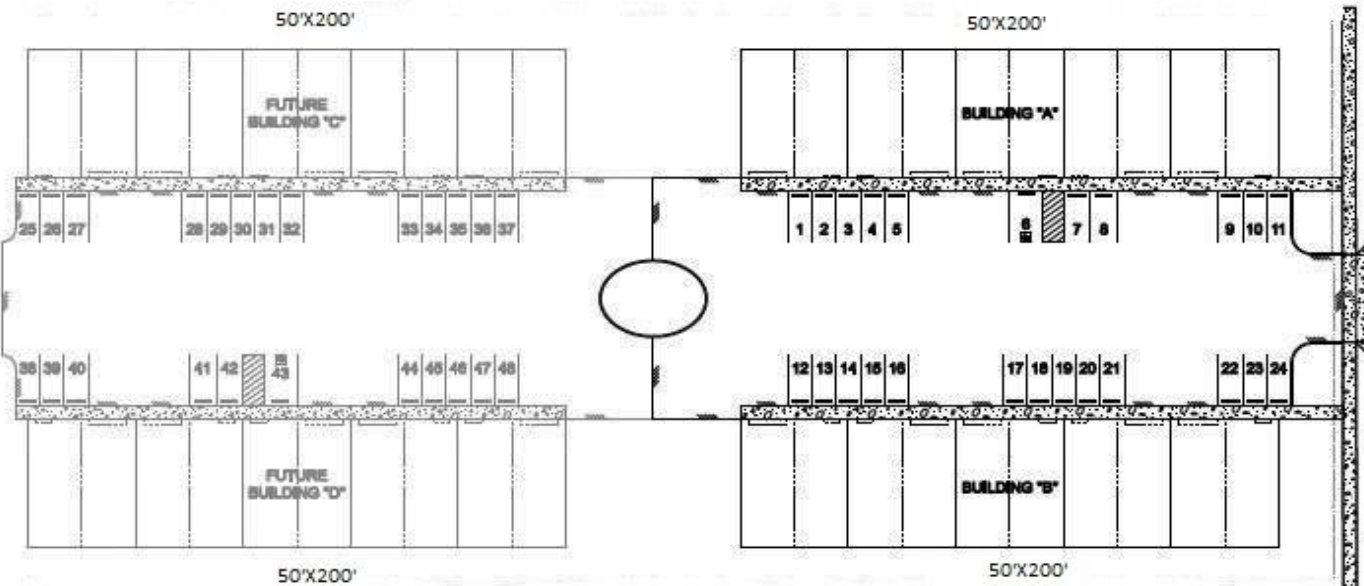
[mary@millerconsultinggroup.net](mailto:mary@millerconsultinggroup.net)



**MILLER CONSULTING GROUP, LLC**

COMMERCIAL AND INVESTMENT REAL ESTATE SERVICES

Information contained herein has been obtained from the owner of the property or other sources that are deemed to be reliable. There is no reason to doubt the accuracy, but it is not guaranteed.



**Above is proposed Site Layout**

**Do not enter property unless accompanied by listing realtor as it currently under construction.**

**Contact Listing agent for Complete Package**

**Mike Morris, Broker**

Direct: 971-241-3847

[mike@millerconsultinggroup.net](mailto:mike@millerconsultinggroup.net)

**Mary Martin Miller, CCIM**

Owner/Principal Broker

Miller Consulting Group, LLC

Direct: 503-740-9200

[mary@millerconsultinggroup.net](mailto:mary@millerconsultinggroup.net)

Licensed in the State of Oregon



**MILLER CONSULTING GROUP, LLC**

COMMERCIAL AND INVESTMENT REAL ESTATE SERVICES

Information contained herein has been obtained from the owner of the property or other sources that are deemed to be reliable. There is no reason to doubt the accuracy, but it is not guaranteed.